

Word of the Day

Spring Term 2026

Week 19 – 26th January 2026



'Words unlock the doors to a world of understanding...'

This Week's Words

Grasshopper

sway

rhyme

rule

stomp

gust

Shinobi

swoop

stumble

average

slumber

selection



VOCABULARY NINJA

Grasshopper (Tier 1)

sway

rhyme

rule

stomp

gust



VOCABULARY NINJA

Shinobi (Tier 2)

swoop

stumble

average

slumber

selection



VOCABULARY NINJA



Grasshopper Word of the Day

Word of the Day:

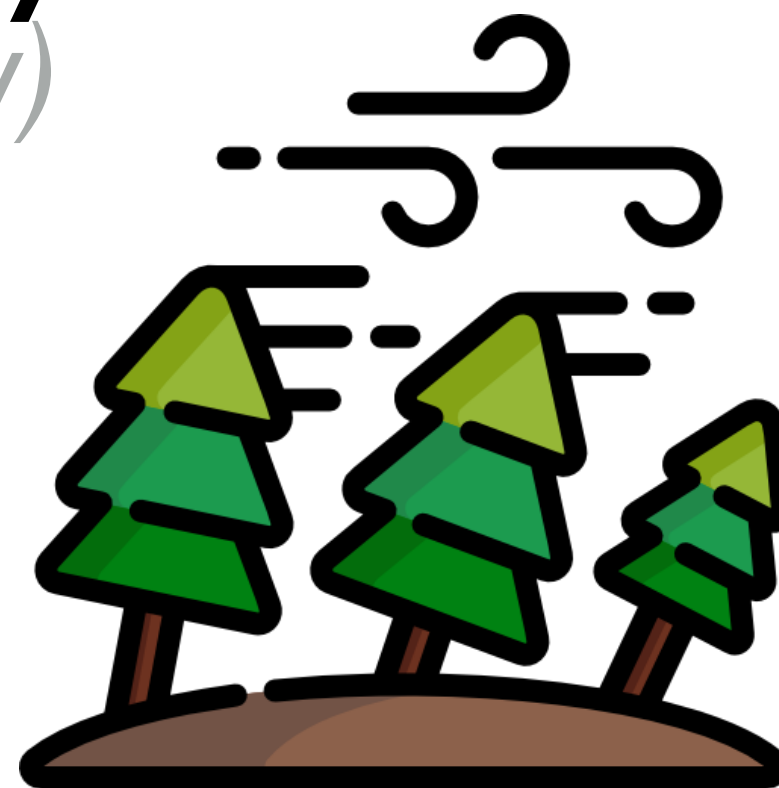
Pronunciation / Syllables

sway
(sway)

Word Class
(verb)

Definition:

When people or things sway, they lean or swing slowly from one side to the other.



The trees on the playground swayed in the wind.

Synonym:

swing

shake

Antonym:

straighten

stabilise

Prefix / Suffix:

-ed

-ing

Rhyme:

they

way

Link Word:

gently

easily



Grasshopper Word of the Day

Word of the Day:

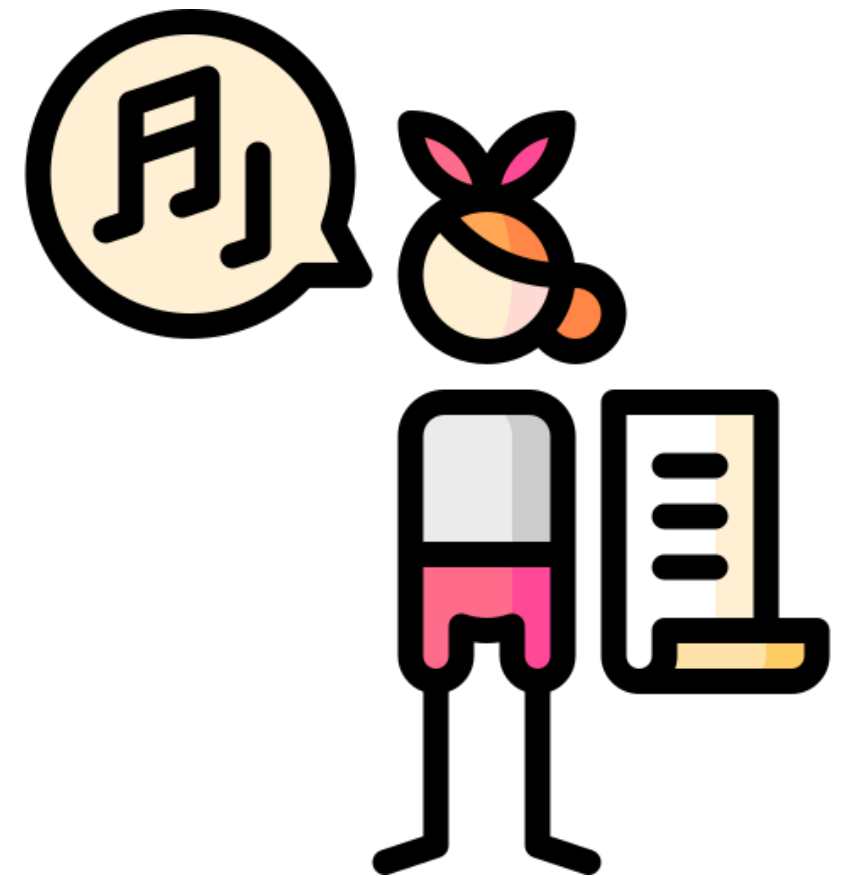
Pronunciation / Syllables

rhyme
(rhyme)

Word Class
(verb / noun)

Definition:

If one word rhymes with another or if two words rhyme, they have a very similar sound. Words that rhyme with each other are often used in poems.



Class 5 loved poems that **rhymed**.

Synonym:

verse

poetry

Antonym:

prose

Prefix / Suffix:

-s

-ed

Rhyme:

time

crime

Link Word:

cleverly

gently



Grasshopper Word of the Day

Word of the Day:

Pronunciation / Syllables

rule
(rule)

Word Class
(noun)

Definition:

Rules are instructions that tell you what you are allowed to do and what you are not allowed to do.



In order to be safe, we must follow the school **rules**.

Synonym:

regulation

order

Antonym:

lawlessness

Prefix / Suffix:

mis-

-ed

Rhyme:

school

cool

Link Word:

follow

break



Grasshopper Word of the Day

Word of the Day:

Pronunciation / Syllables

stomp
(*stomp*)

Word Class
(verb)

Definition:

If you stomp somewhere, you walk there with very heavy steps, often because you are angry.



Mr Robson **stomped** across the hall in his muddy boots.

Synonym:

stamp

clomp

Antonym:

tip-toe

Prefix / Suffix:

-ed

-ing

Rhyme:

swamp

comp

Link Word:

angrily

noisily



Grasshopper Word of the Day

Word of the Day:

Pronunciation / Syllables

gust
(gust)

Word Class
(noun / verb)

Definition:

A gust is a short, strong, sudden rush of wind.



A **gust** of wind nearly knocked the reception children over.

Synonym:

blast
gale

Antonym:

breeze
calm

Prefix / Suffix:

a-
-s

Rhyme:

just
dust

Link Word:

violent
sudden



Shinobi Word of the Day

Word Class
(verb)

Word of the Day:

Pronunciation / Syllables

swoop
(swoop)

Definition:

When a bird or aeroplane swoops, it suddenly moves downwards through the air in a smooth curving movement.



A seagull **swooped** down and pinched my pork pie.

Synonym:

dive

pounce

Antonym:

rise

ascend

Prefix / Suffix:

-ed

-ing

Rhyme:

loop

scoop

Link Word:

graceful

wide



Shinobi Word of the Day

Word of the Day:

stumble
(stum-ble)

Word Class
(verb)

Pronunciation / Syllables

Definition:

If you stumble, you put your foot down awkwardly while you are walking or running and nearly fall over.



John **stumbled** on the coats that were on the floor.

Synonym:

trip

stagger

Antonym:

Prefix / Suffix:

-d

-s

Rhyme:

tumble

crumble

Link Word:

sudden

awkwardly



Shinobi Word of the Day

Word of the Day:

Pronunciation / Syllables

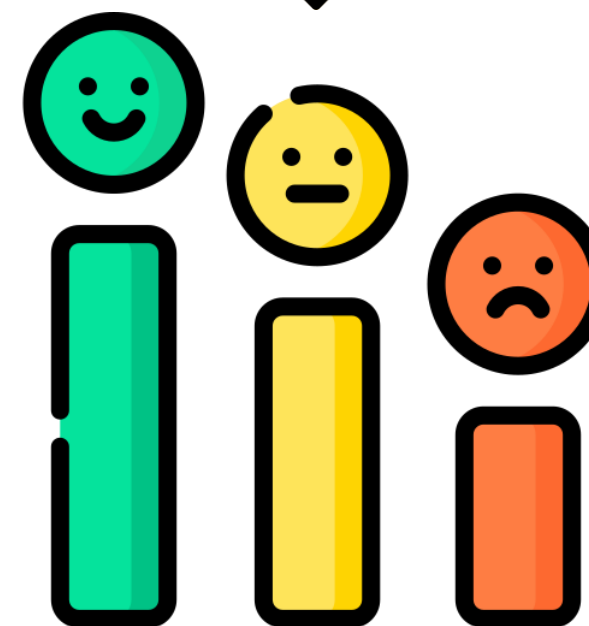
average
(av-er-age)

Word Class
(adjective)



Definition:

An average person or thing is typical or normal.



This week's spelling scores were rather **average**.

Synonym:

ordinary

standard

Antonym:

outstanding

exceptional

Prefix / Suffix:

sub-

-s

Rhyme:

beverage

leverage

Link Word:

decidedly

fairly



Shinobi Word of the Day

Word of the Day:

slumber
(*slum-ber*)

Word Class
(noun / verb)

Pronunciation / Syllables

Definition:

Slumber or sleep is the natural state of rest in which your eyes are closed, your body is inactive, and your mind does not think.



Mr Jones fell into a deep **slumber** at his desk.

Synonym:

snooze

doze

Antonym:

wake-up

conscious

Prefix / Suffix:

-ing

-ed

Rhyme:

number

lumber

Link Word:

deep

broken



Shinobi Word of the Day

Word of the Day:

selection
(se-lec-tion)

Word Class
(noun)

Pronunciation / Syllables

Definition:

A selection of people or things is a set of them that have been selected from a larger group.



There was a fabulous **selection** of fruit to choose from.

Synonym:

range

variety

Antonym:

Prefix / Suffix:

pre-

-s

Rhyme:

collection

direction

Link Word:

wide

superior

Vocabulary Laboratory



Describe / Definition:

Use it in a sentence:

Focus Word (write below):

Word Class:

Synonyms:

(words with same / similar meaning)

Antonyms:

(words with opposite meaning)

Draw your sentence:

Rhymes:

(words that sound the same)

Link Words:

(Example: football = pitch, team, player)

Vocabulary Visualiser

Draw the
Grasshopper words
and bring them to life.



Word: sway

Word: rule

Word: stomp

Word: gust



Vocabulary Visualiser

Draw the **Shinobi**
words and bring
them to life.



Word: swoop

Word: stumble

Word: slumber

Word: selection



Matching Meanings

Draw lines from the **Grasshopper** words to their definitions.



Grasshopper Word

sway

rhyme

rule

stomp

gust

Grasshopper Definitions

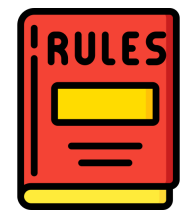
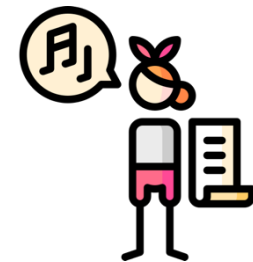
If one word *** with another or if two words ***, they have a very similar sound. Words that *** with each other are often used in poems.

If you *** somewhere, you walk there with very heavy steps, often because you are angry.

When people or things ***, they lean or swing slowly from one side to the other.

A *** is a short, strong, sudden rush of wind.

*** are instructions that tell you what you are allowed to do and what you are not allowed to do.



Matching Meanings

Draw lines from the **Shinobi** words to their definitions.

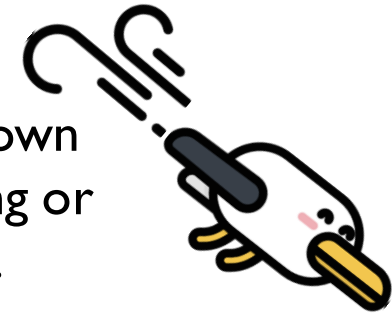


Shinobi Word

Shinobi Definitions

swoop

If you ***, you put your foot down awkwardly while you are walking or running and nearly fall over.



stumble

A *** of people or things is a set of them that have been selected from a larger group.



average

When a bird or aeroplane ***, it suddenly moves downwards through the air in a smooth curving movement.



slumber

*** or sleep is the natural state of rest in which your eyes are closed, your body is inactive, and your mind does not think.



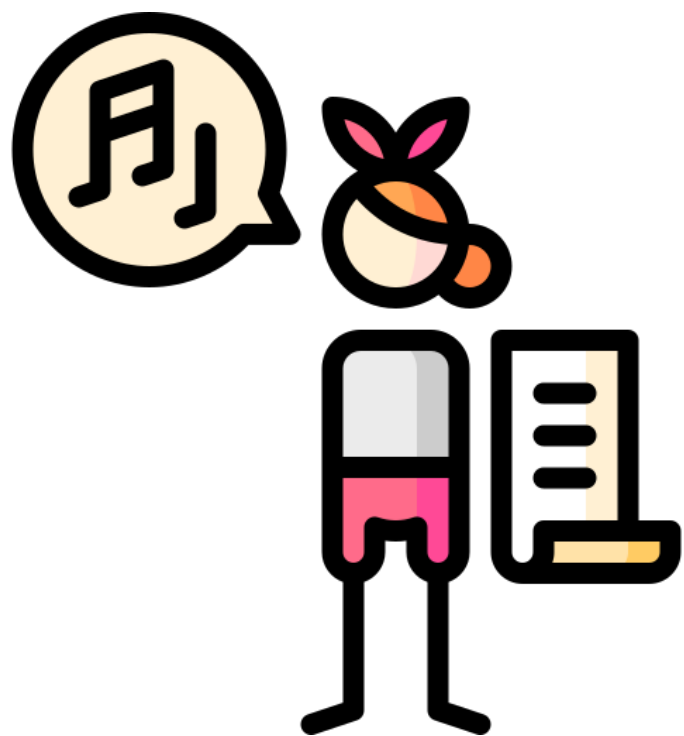
selection

An *** person or thing is typical or normal.





sway



rhyme





rule

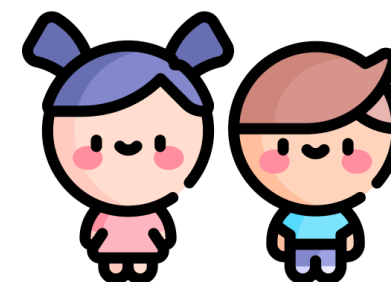


stomp





gust

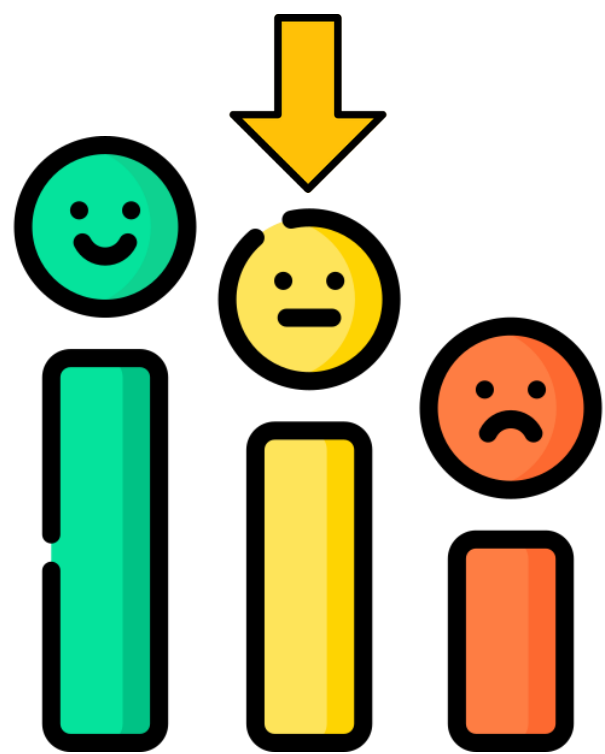


swoop





stumble



average





slumber



selection

